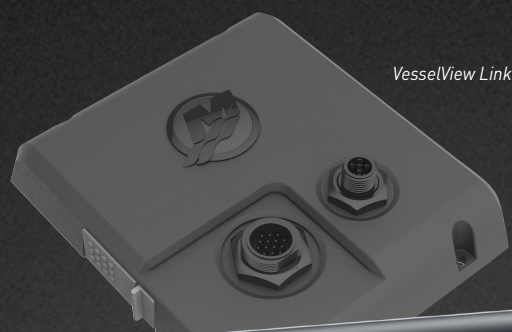


VesselView903

From engine information to vessel systems, the Mercury VesselView903's 9" screen is your information portal for your boat. Mercury VesselView allows boaters to display engine information, genset, sounder info and much more...

- Features a bright 16x9 aspect ratio, high definition glass touchscreen with glare-reducing coating and dimmable lighting
- Features a built-in 10Hz GPS and chart plotter capability (regional electronic chart cards purchased separately)
- Unique touch-only screen interface that delivers intuitive display interaction (optional remote control button interface is available)
- Auto Notification of software updates through the embedded WiFi
- Can be integrated with all the Simrad accessories for the Go9 product line: Radar, Sonar transducers, Fish Finder transducers, AIS, VHF, Sonic Hub/Fusion Link/SiriusXM, C-Zone/Naviop digital switching and more
- Descriptive fault text display provides up-to-date information for 30+ engine parameters including: Fuel Level & Range, Oil Temperature & Pressure, Battery Voltage, Water Depth, Genset and more
- Simultaneous displays information for up to 4 engines in an easy-to-read interface
- Gateway functionality to allow SmartCraft data to be displayed on NMEA 2000 devices
- Supports 16 languages and multiple unit conversions
- Requires Mercury's VesselView Link to fully integrate the propulsion system and make your multi-function display truly multi-functional (included in the kit)
- Can be low profile top mount, flush or bracket mount the display
- Full-featured chartplotter with widest available cartography (Insight, Navionics, CMAP)
- Radar display for Simrad Broadband 3G/4G and Halo Pulse Compression radar systems
- Built-in Broadband Sounder, CHIRP Sonar, StructureScan HD imaging or ForwardScan sonar support (transducer required)



VesselView Link



VesselView903

Description	Part Number
VV903 Multi Engine Kit	8M0129545
VV903 Single Engine Kit	8M00129543