



User Instruction & Installation Manual

L300 110w Searchlight



Product Reference Number:

- | | |
|---------------------------------|----------------------------|
| A6172 – 110/240v Deck | A7201 – 24v Deck |
| A6173 – 110/240v Cabin | A7228 – 24v Cabin |
| A6174 – 110/240v Deck Pedestal | A7229 – 24v Deck Pedestal |
| A6175 – 110/240v Cabin Pedestal | A7230 – 24v Cabin Pedestal |

Manufacturer's details:

Francis Searchlights Ltd
Union Road, Bolton
Lancashire, BL2 2HJ, UK
Tel: +44 (0) 1204 558960
Fax: +44 (0) 1204 558979
<http://www.francis.co.uk>
E-mail: sales@francis.co.uk

Distributor details:

Manual Part Number: C27731

Issue: 4 4.2.20

CONTENTS

- 1 - Introduction
- 2 - Safety Precautions
- 3 - Technical Information
- 4 - Unpacking and Installation Instructions
- 5 - Electrical Installation
- 6 - Operating Instructions
- 7 - Fault Finding
- 8 - Maintenance and Servicing
- 9 - Wiring Diagrams & General Assemblies
- 10 - Spare Parts List

1 - Introduction

It is imperative that this manual is read carefully and understood before installing your equipment. For your future reference please keep this manual in a safe place.

Thank you for specifying a product from the Francis Searchlights range. All Francis products are designed to give complete customer satisfaction and are manufactured to the highest engineering standards in order to ensure optimum performance and service life.

The Francis LED range combines features proven over many years service in the most hazardous conditions in both marine and land installations.

In order to prolong the life and performance of your product, we recommend that you only specify Francis Searchlights spare parts. This will also ensure that any warranties on your equipment will not be invalidated. Information on spares ordering and parts is provided in this manual.

Should you ever need to contact Francis Searchlights Ltd. regarding your equipment, please quote the Product Serial Number at all times.

2 - Safety Precautions

The following instructions must be adhered to, in order to ensure a safe working environment and the safety of the user.

Note: When unpacking or manoeuvring the searchlight into its fixing position, suitable lifting points must be used in order to prevent damage to the equipment or personal injury.

- The high luminance of the LED can cause severe damage to the eye if viewed directly. ALWAYS wear suitable protective goggles when viewing the LED.
- Searchlights get hot. Never touch the unit when lit and always allow 15 to 20 minutes for cooling down after turning the searchlight off.
- Never place anything on or cover the searchlight when in use.
- Ensure the LED has cooled sufficiently before removal.
- Due to the vast range of LED modules available it may appear possible that more powerful LED's can be used in the equipment than for which it was designed. Even when the unit will physically accept a higher wattage LED, this substitution is not recommended and is dangerous. This action will also void any warranties on the equipment.

3 – Technical Information

This product has been designed to operate in accordance with the product specification. The L300 110W LED searchlight has the following features:

- All marine grade materials and fixings.
- Powder coated finish.
- Pan rotation 450°.
- Vertical movement $\pm 40^\circ$ (Deck & Deck Pedestal).
- Vertical movement $+30^\circ$ to -25° (Cabin & Cabin Pedestal).
- Economical 33,000-hour LED life.
- Toughened super clear Optiwhite front glass.
- Parabolic reflector.
- Searchlight & Control Gear protected to IP66.
- Searchlight weight 12 Kgs, PSU weight 2.5 Kgs, Pedestal 4.6Kgs, Cabin control assembly 2.3Kgs & Cabin pedestal assembly 3.3Kgs.

The searchlight also performs to the following optical data:

- Supply voltage – 110/240v ac or 24v dc.
- Luminous flux 13,900.
- Colour temperature 6500K.
- Range – 1129 metres.
- Divergence – 7° spot 20° flood.
- Temperature range: -50 if optional heater is fitted.

In order that the searchlight operates correctly it is imperative that competent personnel are responsible for the installation, operation and servicing of this equipment. Failure to adhere to this advice may cause premature failure or incorrect operation of the searchlight, which may damage the equipment or cause personal injury.

4 - Unpacking and Installation Instructions

The following instructions should be read and fully understood prior to installing the equipment to ensure that the correct procedures are followed, and all safety precautions are observed.

Note: If the equipment has been in storage for a considerable amount of time, it is advisable to conduct a routine maintenance check on all parts before installation.

Safety Precautions

This equipment should not be connected to an electrical supply before being installed. Installation procedures should be adhered to in order to ensure a safe working environment and reduce the risk of damage or personal injury.

Preparing the Mounting Position

Mark out and drill the fixing holes through the deck, using the template provided. If anti-vibration mounts are to be fitted, the fixing holes for the mounts should also be marked out and drilled. Prior to manoeuvring the searchlight into its' fixing position, the AV mounts should be fitted to the base.

In the case of cabin control models, a centre hole is also required to allow the mechanism to pass through. Fit the 'O' ring in position and bolt the searchlight down securely. On an uneven surface it is necessary to use a suitable sealant, such as silicone, to ensure a weatherproofed joint.

For cabin control models it is necessary to remove the Underdeck control assembly prior to installation. Using the Allen key provided, the five grub screws on the Underdeck mechanism should be loosened to allow the Underdeck control assembly to be removed. The outer tube can now be positioned through the centre hole. The searchlight base can now be securely fixed as stated above.

Upon installation, re-assemble the Underdeck control mechanism ensuring the grub screws are secure and the mechanism operates correctly.

Fitting Instructions for Cabin Model

Preparing the Mounting Position

Using the template provided mark out and drill the fixing holes through the deck or cabin roof. In the case of cabin control models, a centre hole is also required to allow the mechanism to pass through.

Mounting the Searchlight

For Deck Models:

Fit the 'O' ring in position and bolt the searchlight base securely down. On an uneven surface it is necessary to use a suitable sealant, such as silicone, in order to ensure a weather proofed joint.

For Cabin/Cabin Pedestal Models:



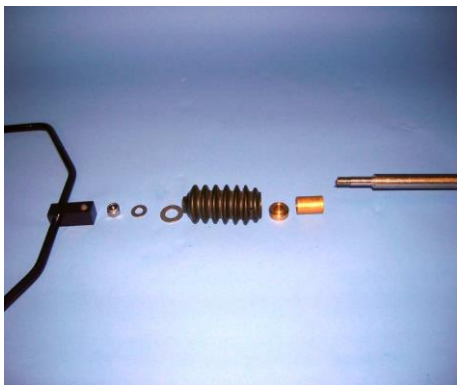
1. Remove the Base Lock Wheel.



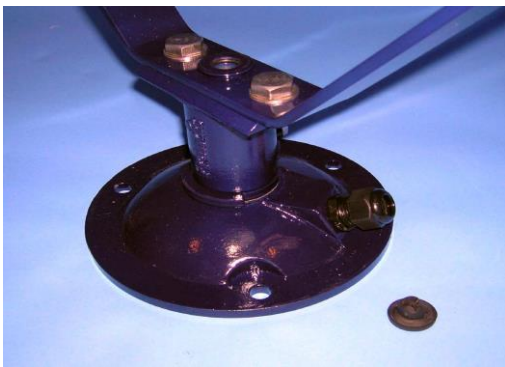
2. Replace Lock Wheel with M8 x 10 hexagon screw in the bottom fixing



3. Now remove the following items as these are only required on deck models Barrel Lock Wheel, Elevation Link and fixings



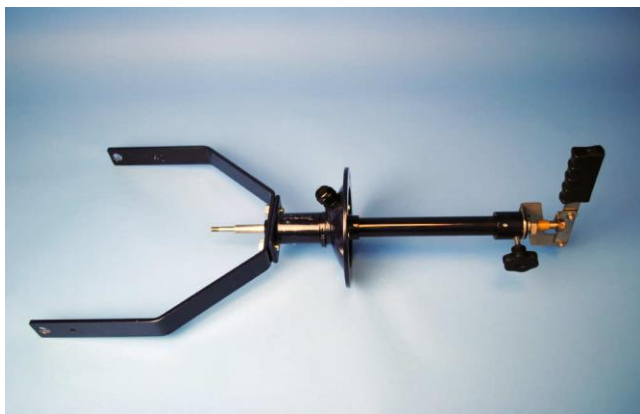
4. When installing the Under Deck mechanism, first separate the following items. U-Piece Assembly, M8 nyloc nut, M8 plain washer, M12 plain washer, Rubber Bellows, Bellows Top Bush and the Push Rod Top Bush



5. Remove the Blanking Plug from the Bellows Bottom Bush.



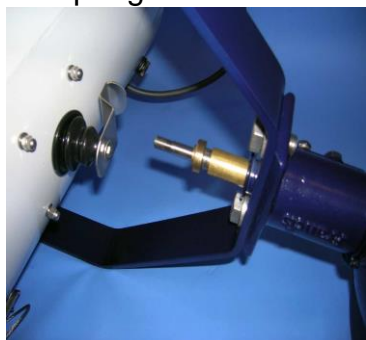
6. Insert the Under Deck through the centre hole making sure it's aligned as photos below



7. Fasten the Under Deck mechanism Using the 3 off M6 x 16 screws and spring washers



8. Re-Fit the following items:
Push Rod Top Bush



9. Bellows Top Bush.

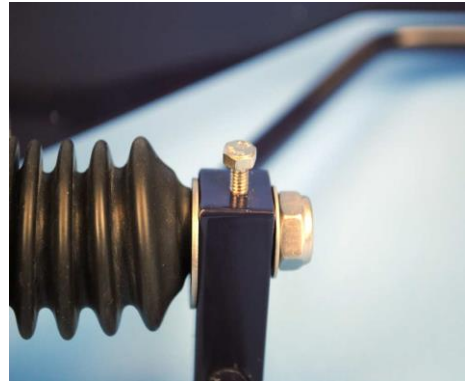


10. Bellows.



11. M12 plain washer. U-Piece Assy.
M8 plain washer. M8 nyloc nut.

12. Make sure the mechanism is in this position before tightening the M5 x 8 hexagon screw onto the flat of the push rod



13. U-Piece fixings.



14. Fix the U-Piece Assembly using U-Piece fixings make sure there is a plain washer both sides of the U-Piece Bush.



15. Completed.
Make sure the Searchlight pans and tilts correctly.

For Pedestal Models:

Mark out and drill through cabin roof using the template provided. Remove the cable gland in the base and replace with the blanking plug supplied. Secure the pedestal to the deck using appropriate fixings and then mount the searchlight to the pedestal and secure using the fixings provided. A drilled hole is also required in the deck to allow for the connection to an electrical supply. The searchlight is supplied with 3 metres of supply cable so that the installer can choose a suitable connection point.

5 - Electrical Installation

For safety purposes, only competent personnel should perform the electrical installation. All equipment should be installed to current Electrical Regulations and Standards.

In order to obtain the maximum light output from the searchlight, it is essential that the full operating voltage of the LED fitted be applied to the LED contacts.

Method of Electrical Connection

- 1) Disconnect the supply before working on the electrical system.
- 2) The searchlight must be connected to a fused electrical supply, using suitably sized cable.
- 3) If the searchlight is located a considerable distance from the supply, provision must be made in the cable size in order to overcome the voltage drop.
- 4) Whenever possible cable terminations should be made below deck and with approved terminal devices.
- 5) If a spare auxiliary fuse or circuit breaker is not available, one of the correct type/rating should be fitted and connected to a positive supply. It is advisable to locate a bus bar or main connection and avoid any direct connection to the supply:
- 6) For 110/220v AC products, the following colour coding system should be used for the customer supply cable:

Brown	- Live
Blue	- Negative
Green/Yellow	- Earth

Installation Guideline

A typical installation and connection routine for the L300 110W LED 110/240v searchlight is as follows:

Referring to wiring diagram C27730, a supply is fed into the driver junction box, which then provides a common feed to the searchlight.

Cables required to be connected by the customer: -

3 cores 1.5mm cable from the driver junction box to the Searchlight,

(Customer may need to provide a suitable junction box to this cable, 3 metres supplied).

The Mains cable to the driver junction box is to be supplied by the customer.

A typical installation and connection routine for the L300 110W LED 24v searchlight is as follows:

Referring to wiring diagram C28533, a supply is fed into the driver junction box, which then provides a common feed to the searchlight.

Cables required to be connected by the customer: -

3 cores 1.5mm cable from the driver junction box to the Searchlight,

(Customer may need to provide a suitable junction box to this cable, 3 metres supplied).

The Mains cable to the driver junction box is to be supplied by the customer.

6 - Operating Instructions

This equipment is designed for use out of doors, in free air. Never place anything on or cover the searchlight when in use as this may present a hazard.

The searchlight can be positioned using the elevation and base plate lockwheels. When in the desired position the lockwheels should be securely fastened to maintain position.

The beam of the searchlight can be adjusted to give a variety of beam types. Using the focus knob on the underside of the searchlight, the desired beam can be achieved for any particular application. The beam will move through 'spot' to 'flood'. In order to fix the beam type; simply release the knob at the desired position

Using the template provided mark out and drill the fixing holes through the deck or cabin roof. In case of cabin control models, a centre hole is also required to allow the mechanism to pass through.

On an uneven surface when bolting down the searchlight it is necessary to use a suitable sealant, such as silicone, in order to ensure weather proofed joint.

Please note that if an optional heater is fitted, it is advisable to leave the heater permanently in the 'ON' position in order to remove any condensation. The heater specified on this equipment is self-regulating and will shut off when the dew point temperature is reached.

This product should not be used for any purpose other than for which it was designed. Any modifications to the product should not be undertaken without consulting the manufacturer.

7- Fault Finding

All fault finding must be conducted by a competent person or qualified Electrical Engineer.

Failure of LED to light.

In the event of the LED failing to light the following steps should be taken:

- 1) Check that the mains supply is connected to the input of the LED driver and check all connections as per the wiring diagram. On operation if the LED does not light, switch off mains supply and check all fuses.

8 - Maintenance and Servicing

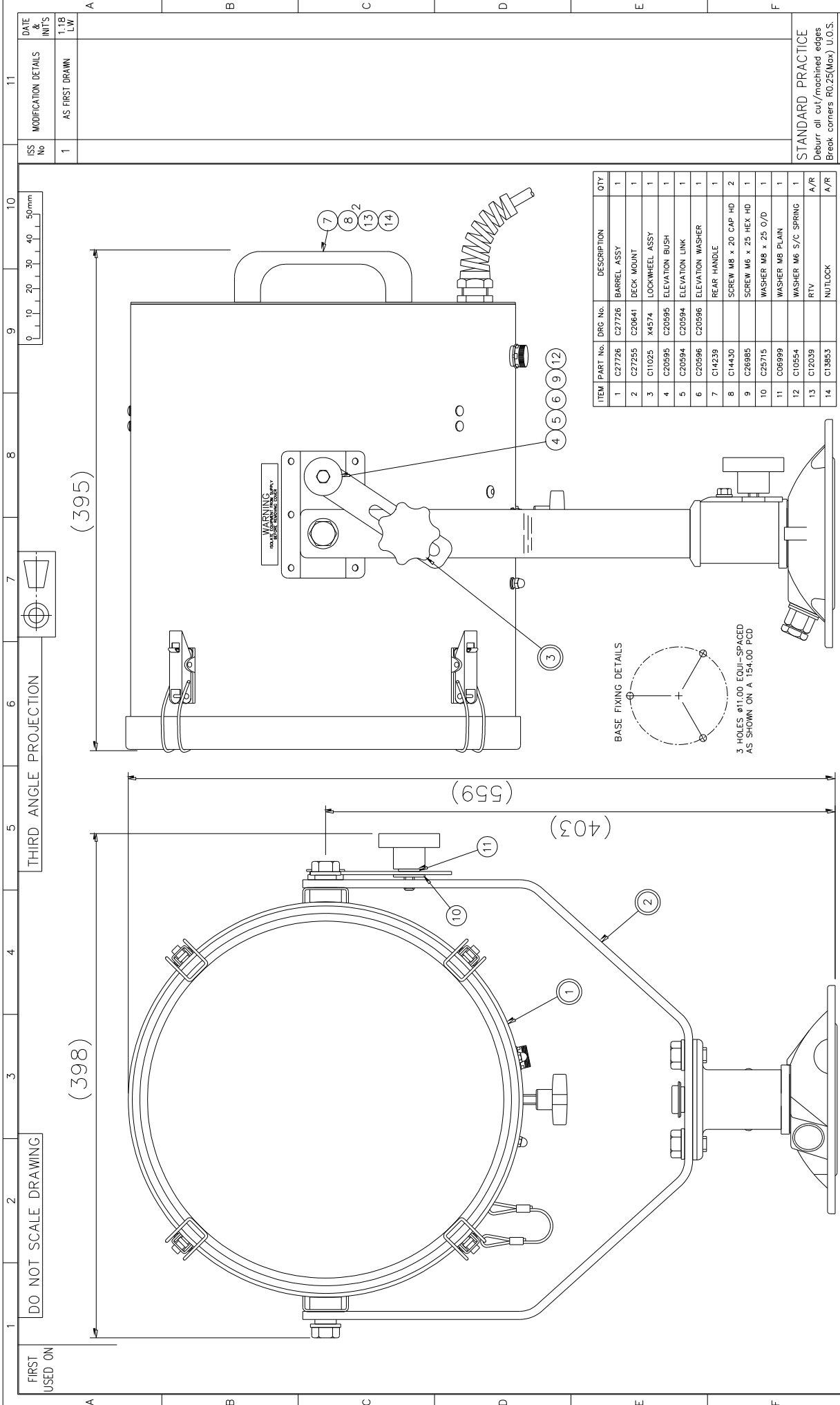
In order to prolong the service life and performance of your searchlight, the following maintenance guidelines are recommended:

- Maintenance checks should be conducted before every voyage or at least every three months.
- Before checking, disconnect the equipment from the supply.
- Visually inspect the condition of the equipment.
- Any major or minor structural damage should be rectified immediately in order to reduce sympathetic wear.
- After inspection it may be necessary to clean the inside of the searchlight. The following procedure should be adhered to:
 - Remove the front bezel.
 - Clean the front glass inside and out using a proprietary glass cleaner.
 - Clean the lenses if required.
- It is advisable to check all seals and gaskets for signs of degradation. Renew if necessary.
- Upon completing all maintenance requirements, the searchlight should be tested for full working order (approximately 20 minutes).
- Every six months the external movement mechanisms i.e. lockwheels, elevation and pan mechanisms, should be lightly lubricated.

If in any doubt as to the correct servicing procedures to adopt please contact your distributor/agent or the manufacturer who will be able to advise the best course of action for your product.

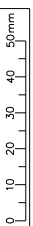
9 - Wiring Diagrams & General Assemblies

Drawing Number	Description
A6172 A7201	L300 110W LED Deck 110/240V General Assembly L300 110W LED Deck 24V General Assembly
A6173 A7228	L300 110W LED Cabin 110/240V General Assembly L300 110W LED Cabin 24V General Assembly
A6174 A7229	L300 110W LED Deck Pedestal 110/240V General Assembly L300 110W LED Deck Pedestal 24v General Assembly
A6175 A7230	L300 110W LED Cabin Pedestal 110/240V General Assembly L300 110W LED Cabin Pedestal 24V General Assembly
C27730	Wiring Diagram 110/240V
C28533	Wiring Diagram 24V
C27704	Driver Box Assembly 110/240V
C28484	Driver Box Assembly 24V



DO NOT SCALE DRAWING

THIRD ANGLE PROJECTION



DATE & INTS	MODIFICATION DETAILS
1.18 LW	AS FIRST DRAWN

ISS No 1

ITEM	PART No.	DRG No.	DESCRIPTION	QTY
1	C27726	C27726	BARREL ASSY	1
2	C27255	C20641	DECK MOUNT	1
3	C11025	X4574	LOCKWHEEL ASSY	1
4	C20595	C20595	ELEVATION BUSH	1
5	C20594	C20594	ELEVATION LINK	1
6	C20596	C20596	ELEVATION WASHER	1
7	C14239		REAR HANDLE	1
8	C14430		SCREW M6 x 20 CAP HD	2
9	C26985		SCREW M6 x 25 HEX HD	1
10	C25715		WASHER M6 x 25 O/D	1
11	C06999		WASHER M6 FLAIN	1
12	C10554		WASHER M6 S/C SPRING	1
13	C12039		RTV	A/R
14	C13853		NUTLOCK	A/R

BASE FIXING DETAILS



3 HOLES #11.00 EQUI-SPACED AS SHOWN ON A 154.00 PCD

STANDARD PRACTICE
Deburr all out/machined edges
Break corners R0.25(Max) U.O.S.

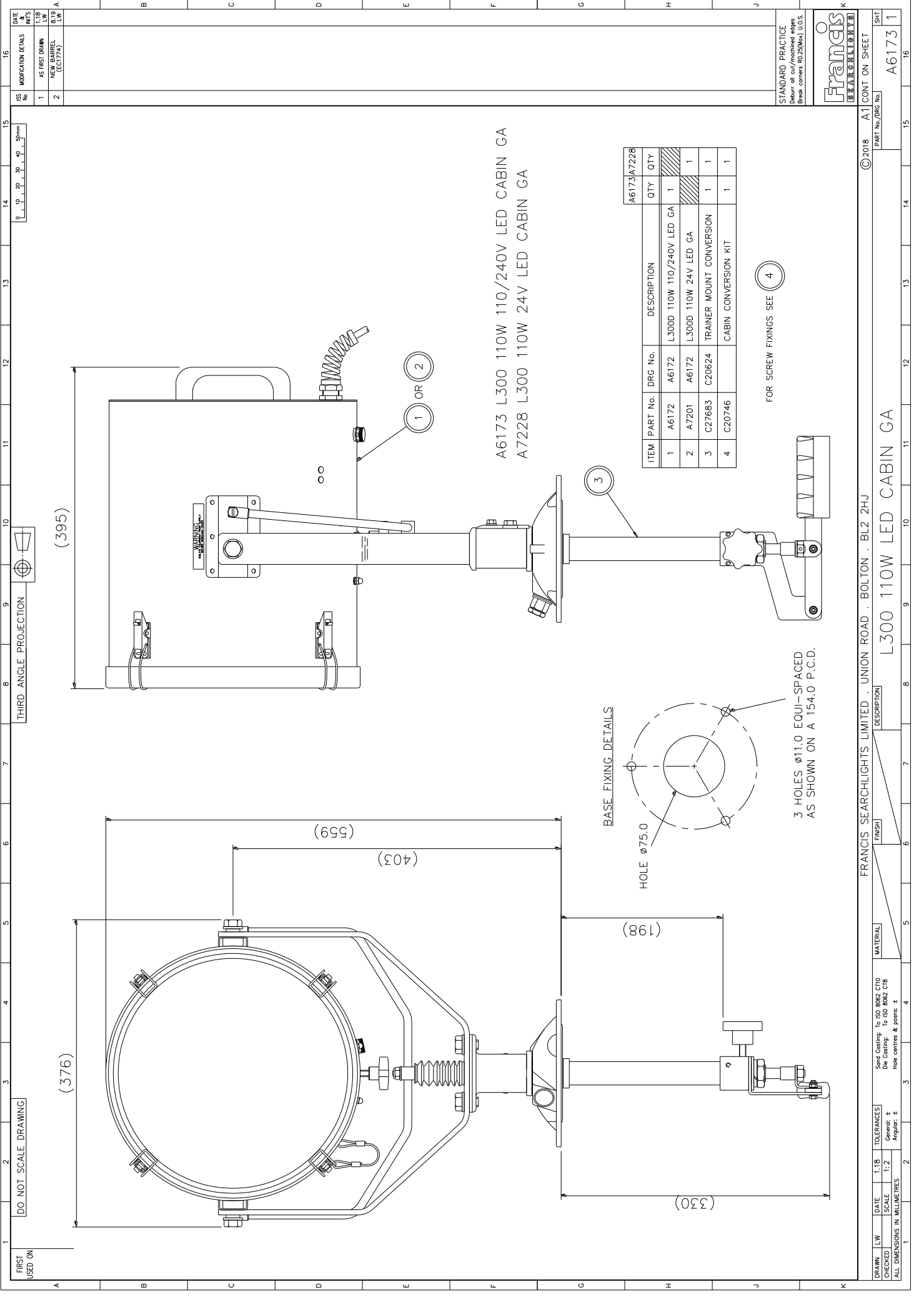
A6172 L300D 110W 110/240V LED GA
A7201 L300D 110W 24V LED GA

Francis
SEARCHLIGHTS

FRANCIS SEARCHLIGHTS LIMITED . UNION ROAD . BOLTON . BL2 2HU

©2018 A2 CONT ON SHEET

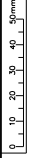
DRAWN	LW	DATE	1.18	TOLERANCES	FINISH	DESCRIPTION	PART No./DRG No.	SHEET
CHECKED		SCALE	1:2	General: ± Angular: ±		L300D 110W LED GA	A6172	1
ALL DIMENSIONS IN MILLIMETRES				Sand Coating: To ISO 8062 C10 Die Coating: To ISO 8062 C18 Hole centres & posns: ±				



DO NOT SCALE DRAWING

FIRST USED ON

THIRD ANGLE PROJECTION



DATE	BY	DESCRIPTION
1	AS FIRST DRAWN	L300 NEW BARREL (EC1774)
2	NEW BARREL	(EC1774)

16 15 14 13 12 11 10 9 8 7 6 5 4 3 2 1

A B C D E F G H J K

16 15 14 13 12 11 10 9 8 7 6 5 4 3 2 1

A B C D E F G H J K

16 15 14 13 12 11 10 9 8 7 6 5 4 3 2 1

A B C D E F G H J K

16 15 14 13 12 11 10 9 8 7 6 5 4 3 2 1

A B C D E F G H J K

16 15 14 13 12 11 10 9 8 7 6 5 4 3 2 1

A B C D E F G H J K

16 15 14 13 12 11 10 9 8 7 6 5 4 3 2 1

A B C D E F G H J K

16 15 14 13 12 11 10 9 8 7 6 5 4 3 2 1

A B C D E F G H J K

16 15 14 13 12 11 10 9 8 7 6 5 4 3 2 1

A B C D E F G H J K

16 15 14 13 12 11 10 9 8 7 6 5 4 3 2 1

A B C D E F G H J K

16 15 14 13 12 11 10 9 8 7 6 5 4 3 2 1

A B C D E F G H J K

16 15 14 13 12 11 10 9 8 7 6 5 4 3 2 1

A B C D E F G H J K

16 15 14 13 12 11 10 9 8 7 6 5 4 3 2 1

A B C D E F G H J K

16 15 14 13 12 11 10 9 8 7 6 5 4 3 2 1

A B C D E F G H J K

16 15 14 13 12 11 10 9 8 7 6 5 4 3 2 1

A B C D E F G H J K

16 15 14 13 12 11 10 9 8 7 6 5 4 3 2 1

A B C D E F G H J K

16 15 14 13 12 11 10 9 8 7 6 5 4 3 2 1

A B C D E F G H J K

16 15 14 13 12 11 10 9 8 7 6 5 4 3 2 1

A B C D E F G H J K

16 15 14 13 12 11 10 9 8 7 6 5 4 3 2 1

A B C D E F G H J K

16 15 14 13 12 11 10 9 8 7 6 5 4 3 2 1

A B C D E F G H J K

16 15 14 13 12 11 10 9 8 7 6 5 4 3 2 1

A B C D E F G H J K

16 15 14 13 12 11 10 9 8 7 6 5 4 3 2 1

A B C D E F G H J K

16 15 14 13 12 11 10 9 8 7 6 5 4 3 2 1

A B C D E F G H J K

16 15 14 13 12 11 10 9 8 7 6 5 4 3 2 1

A B C D E F G H J K

16 15 14 13 12 11 10 9 8 7 6 5 4 3 2 1

A B C D E F G H J K

16 15 14 13 12 11 10 9 8 7 6 5 4 3 2 1

A B C D E F G H J K

16 15 14 13 12 11 10 9 8 7 6 5 4 3 2 1

A B C D E F G H J K

16 15 14 13 12 11 10 9 8 7 6 5 4 3 2 1

A B C D E F G H J K

16 15 14 13 12 11 10 9 8 7 6 5 4 3 2 1

A B C D E F G H J K

16 15 14 13 12 11 10 9 8 7 6 5 4 3 2 1

A B C D E F G H J K

DATE	SCALE	TOLERANCES
1.18	1:2	General: ± Angular: ±

FINISH	MATERIAL	DESCRIPTION
		L300 110W LED CABIN GA

FRANCIS SEARCHLIGHTS LIMITED · UNION ROAD · BOLTON · BL2 2HJ

© 2018 A1 CONT ON SHEET

PART No./PRG No.

A6173 1

SHT

A6173 1

STANDARD PRACTICE
Debur all cut/machined edges
Break corners R0.2(0.08) U.O.S.



ITEM	PART No.	DRG No.	DESCRIPTION	QTY	QTY
1	A6172	A6172	L300D 110W 110/240V LED GA	1	1
2	A7201	A6172	L300D 110W 24V LED GA	1	1
3	C27683	C20624	TRAINER MOUNT CONVERSION	1	1
4	C20746		CABIN CONVERSION KIT	1	1

FOR SCREW FIXINGS SEE 4

3 HOLES $\phi 11.0$ EQUI-SPACED
AS SHOWN ON A 154.0 P.C.D.

FIRST USED ON

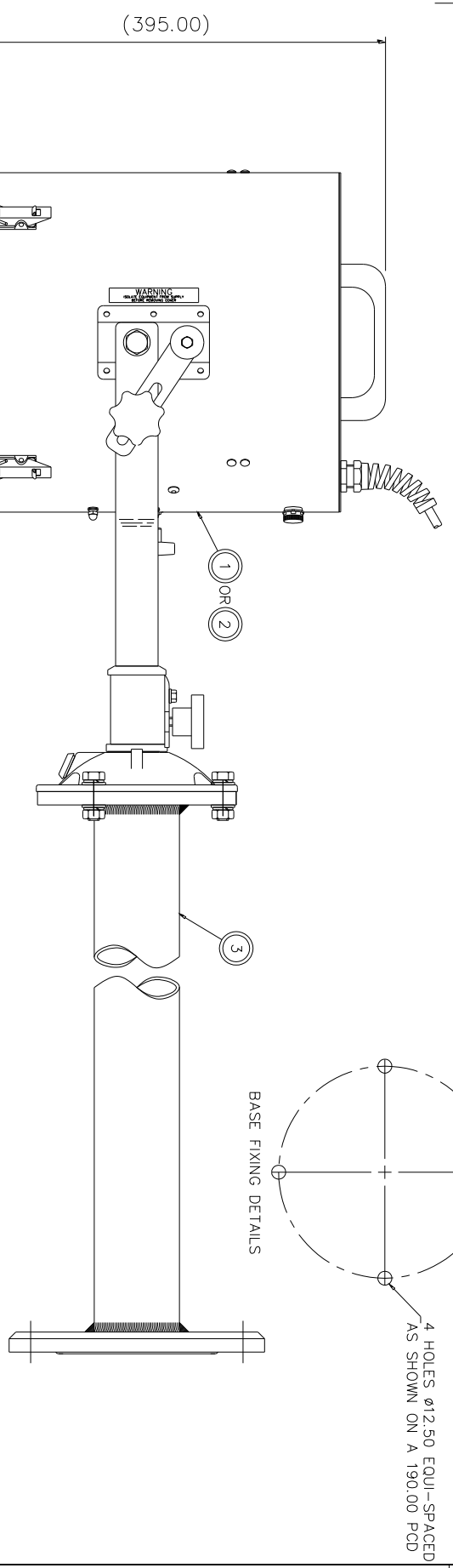
DO NOT SCALE DRAWING

THIRD ANGLE PROJECTION

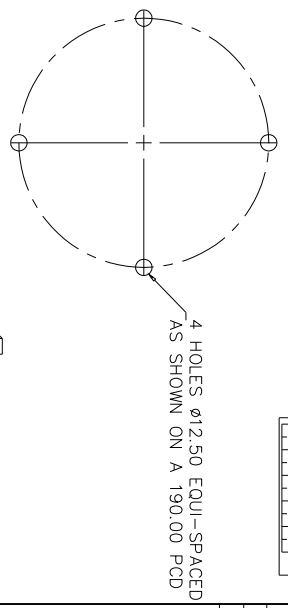


0 10 20 30 40 50mm

ISS No	MODIFICATION DETAILS	DATE
1	AS FIRST DRAWN	1.18 LW
2	NEW BARREL (S17/17)	2.19 LW

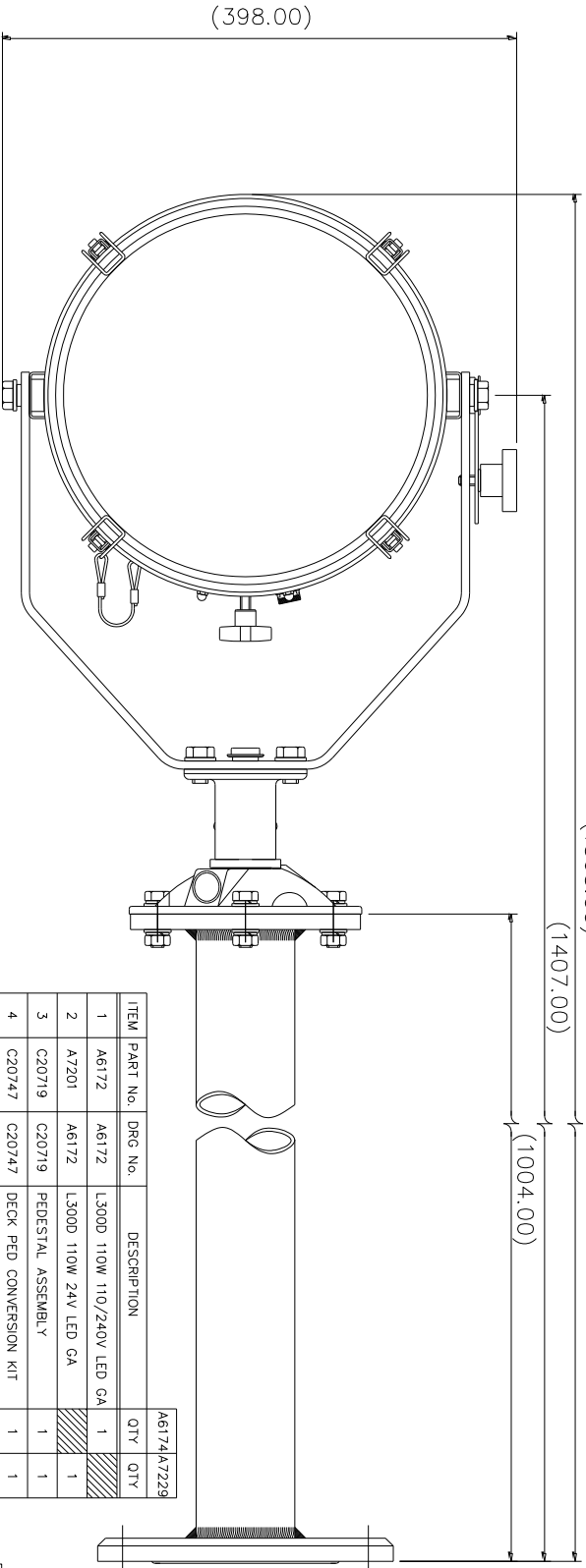


BASE FIXING DETAILS



4 HOLES - ϕ 12.50 EQUI-SPACED AS SHOWN ON A 190.00 PCD

A6174 L300DP 110W 110/240V LED GA
 A7229 L300DP 110W 24V LED GA
 (1563.00)



ITEM	PART No.	DRG No.	DESCRIPTION	QTY	QTY
1	A6172	A6172	L300D 110W 110/240V LED GA	1	1
2	A7201	A6172	L300D 110W 24V LED GA	1	1
3	C20719	C20719	PEDESTAL ASSEMBLY	1	1
4	C20747	C20747	DECK PED CONVERSION KIT	1	1

FOR SCREW FIXING KIT SEE (4)

STANDARD PRACTICE
 Remove all cut/finished edges
 Break corners R0.25(0.010) U.S.

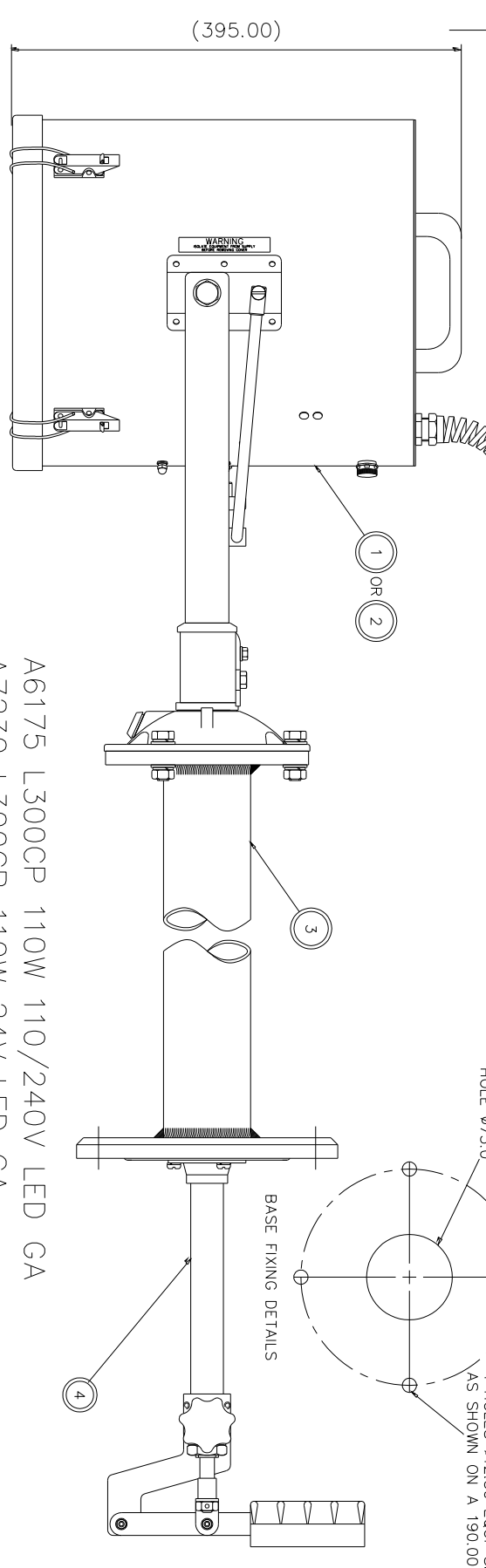


DRW No	DATE	TOLERANCES
LW	1.18	General: 1/2 Angles: 1
CHECKED	SCALE	
	1:2	

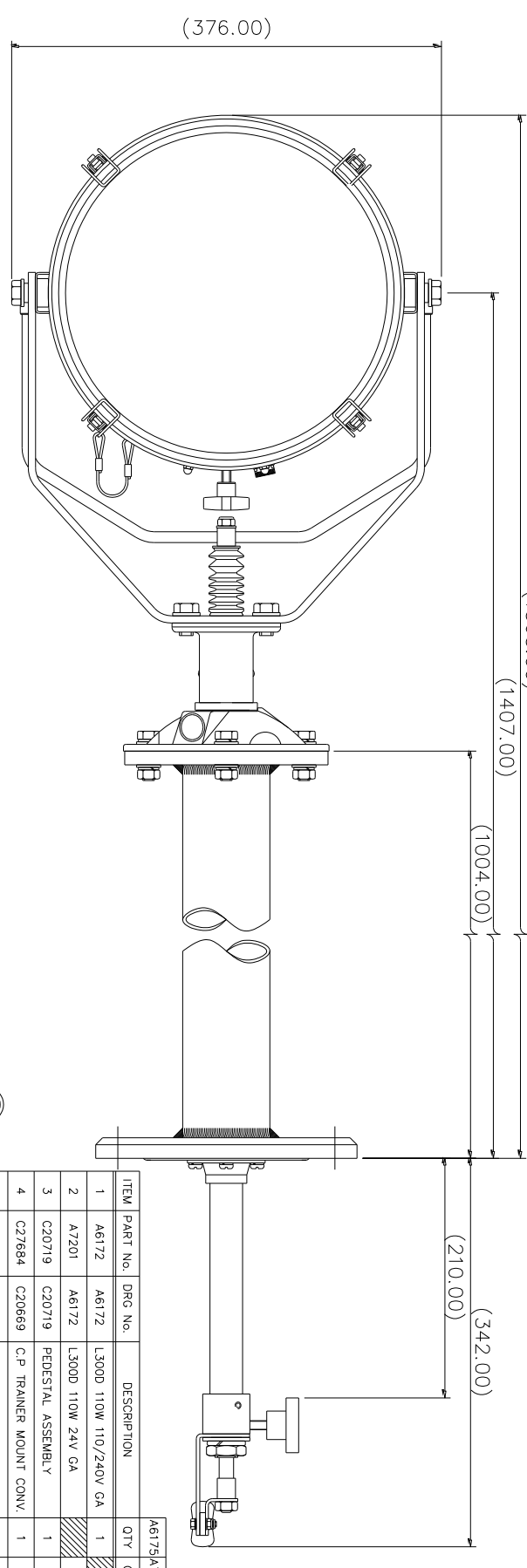
FRANCIS SEARCHLIGHTS LIMITED . UNION ROAD . BOLTON . BL2 2JU

L300DP 110W LED GA

© 2018 A11 CONT ON SHEET
 PART No./DRG No.
 A6174 1



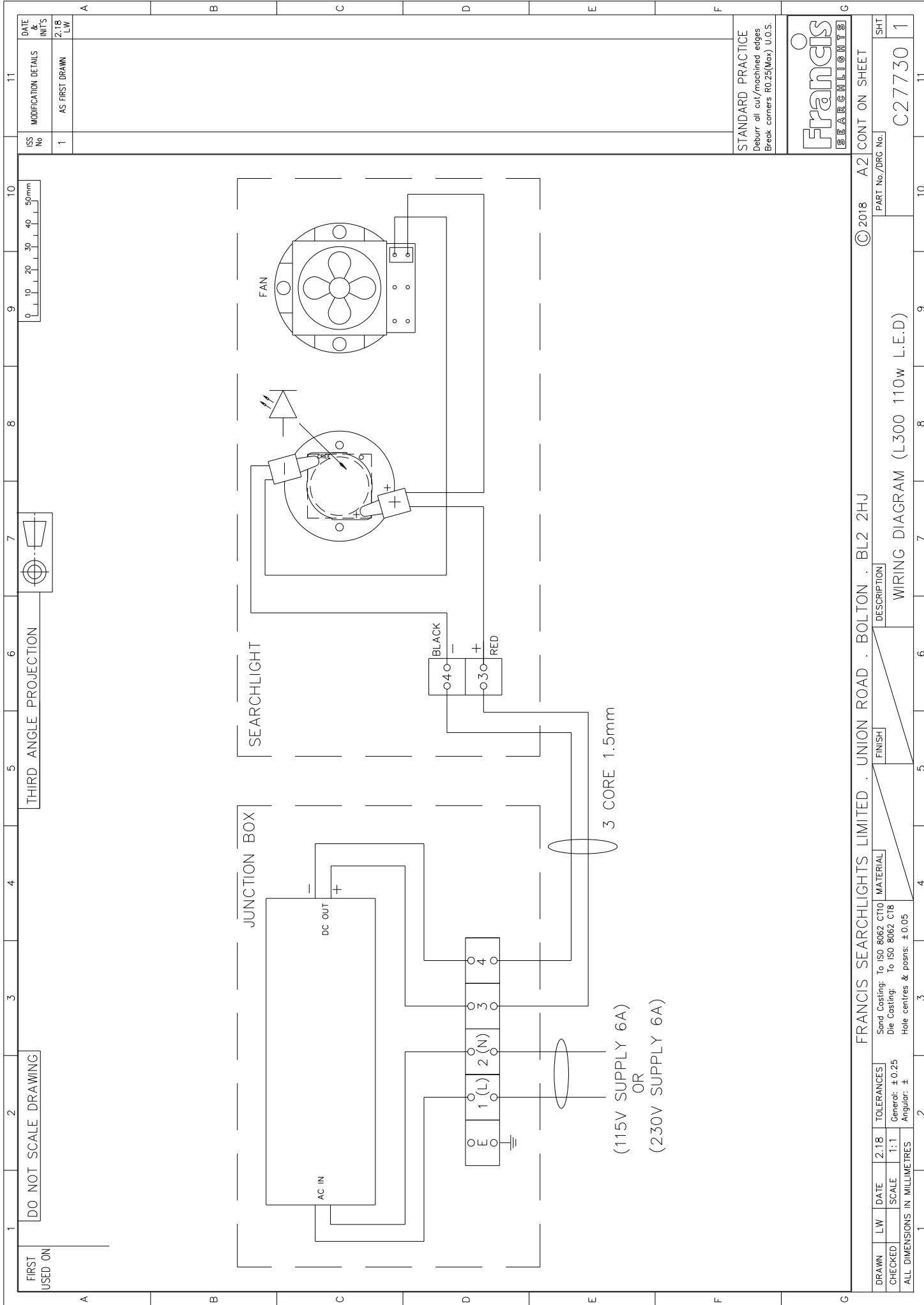
A6175 L300CP 110W 110/240V LED GA
 A7230 L300CP 110W 24V LED GA



FOR SCREW FIXING KIT SEE (5)

ITEM	PART No.	DRG No.	DESCRIPTION	QTY	QTY
1	A6172	A6172	L300D 110W 110/240V GA	1	1
2	A7201	A6172	L300D 110W 24V GA	1	1
3	C20719	C20719	PEDESTAL ASSEMBLY	1	1
4	C27684	C20669	C/P TRAINER MOUNT CONV.	1	1
5	C20748	C20748	CAB PED CONVERSION KIT	1	1

STANDARD PRACTICE
 Debur all cut/machined edges
 Break corners R0.25(0.010) U0.03



ISS No	1
DATE & INT'S	2.18 LW
MODIFICATION DETAILS	AS FIRST DRAWN

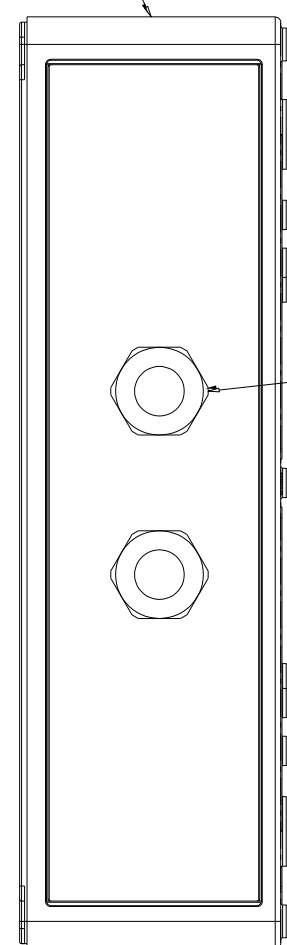
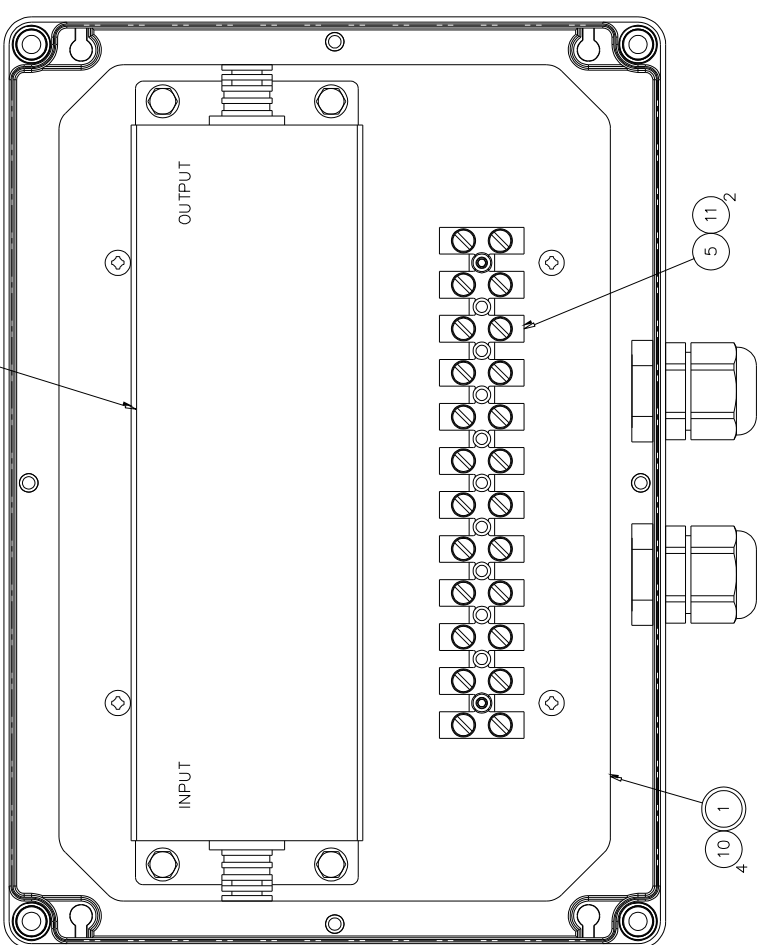
1	2	3	4	5	6	7	8	9	10	11
---	---	---	---	---	---	---	---	---	----	----

STANDARD PRACTICE Deburr all cut/machined edges Break corners R0.25(Max) U.O.S.										

FRANCIS SEARCHLIGHTS LIMITED . UNION ROAD . BOLTON . BL2 2HJ	© 2018	A2	CONT ON SHEET
FINISH	DESCRIPTION	PART No./DRG No.	SHT
	WIRING DIAGRAM (L300 110w L.E.D)	C27730	1
Sand Casting: To ISO 8062 CT10 Die Casting: To ISO 8062 CT8 Hole centres & posns: ± 0.05		TOLERANCES General: ± 0.25 Angular: ±	
DRAWN	LW	DATE	2.18
CHECKED	SCALE	1:1	
ALL DIMENSIONS IN MILLIMETRES			

DATE	INIT'S	MODIFICATION DETAILS	ISS No
1.18	LW	AS FIRST DRAWN	1
8.19	LW	NEW DRIVER & CHASSIS PLATE (C21776)	2

ITEM	PART No.	DRG No.	DESCRIPTION	QTY
1	C27705	027705	CHASSIS PLATE S/ASSY	1
2	C27094	C27094	ENCLOSURE DRILLING	1
3	C27699		LED DRIVER	1
4	C10158		M20 CABLE GLAND	2
5	C15133		TERMINAL BLOCK	1
6	C21464		230V WARNING LABEL	1
7	C22036		ISOLATE SUPPLY LABEL	1
8	C04900		FRANCIS EXTERIOR LABEL	1
9	C26955		M4 x 10 HEX HD SCREW	4
10	C23598		M4 x 8 POZI HD SCREW	4
11	C10203		M3 x 16 BTN HD SCREW	2
12	C04376		M4 PLAIN WASHER	4
13	C08793		M4 S/C SPRING WASHER	4



FIT LABELS CENTRALLY ON LID

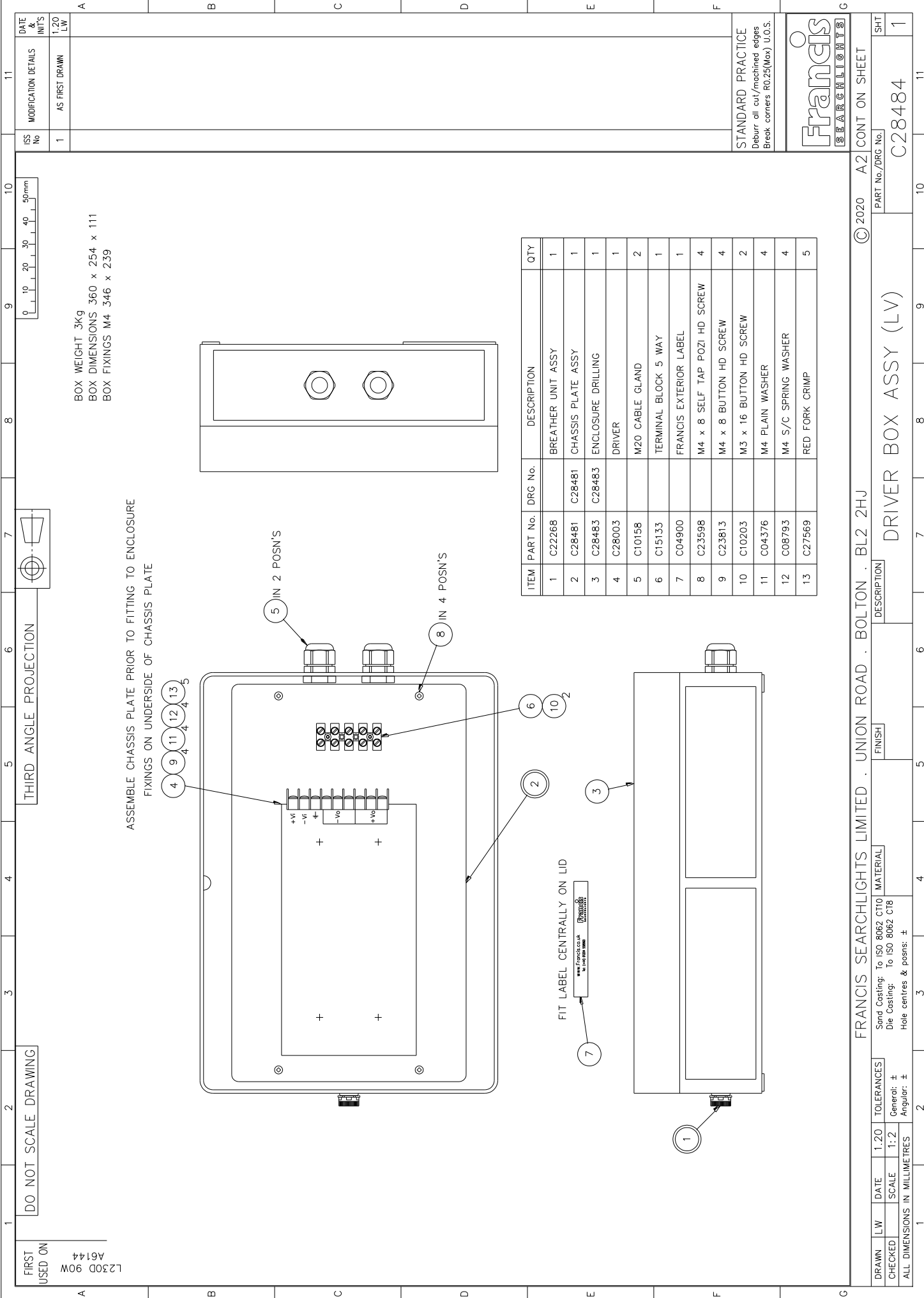
WARNING
ISOLATE SUPPLY BEFORE OPENING COVER

DANGER
230v

www.Francis.co.uk
Tel: (+44) 01204 558666

Francis
SEARCHLIGHTS

BOX DIM'N 254 x 180 x 90
BASE FIXINGS M4 239 x 165



DO NOT SCALE DRAWING

THIRD ANGLE PROJECTION

BOX WEIGHT 3Kg
BOX DIMENSIONS 360 x 254 x 111
BOX FIXINGS M4 346 x 239

ASSEMBLE CHASSIS PLATE PRIOR TO FITTING TO ENCLOSURE
FIXINGS ON UNDERSIDE OF CHASSIS PLATE

5 IN 2 POSN'S

8 IN 4 POSN'S

FIT LABEL CENTRALLY ON LID

www.francis.co.uk
SEARCHLIGHTS

FRANCIS SEARCHLIGHTS LIMITED . UNION ROAD . BOLTON . BL2 2HU

FRANCIS
SEARCHLIGHTS

DATE & INITIALS	1.20 LW
MODIFICATION DETAILS	AS FIRST DRAWN
ISS No	1

ITEM	PART No.	DRG No.	DESCRIPTION	QTY
1	C22268		BREATHER UNIT ASSY	1
2	C28481	C28481	CHASSIS PLATE ASSY	1
3	C28483	C28483	ENCLOSURE DRILLING	1
4	C28003		DRIVER	1
5	C10158		M20 CABLE GLAND	2
6	C15133		TERMINAL BLOCK 5 WAY	1
7	C04900		FRANCIS EXTERIOR LABEL	1
8	C23598		M4 x 8 SELF TAP POZI HD SCREW	4
9	C23813		M4 x 8 BUTTON HD SCREW	4
10	C10203		M3 x 16 BUTTON HD SCREW	2
11	C04376		M4 PLAIN WASHER	4
12	C08793		M4 S/C SPRING WASHER	4
13	C27569		RED FORK CRIMP	5

STANDARD PRACTICE
Deburr all cut/machined edges
Break corners R0.25(Max) U.O.S.

© 2020 A2 CONT ON SHEET
PART No./DRG No. C28484
SHT 1

DRIVER BOX ASSY (LV)

DRAWN LW	DATE	1.20	TOLERANCES
CHECKED	SCALE	1:2	General: ± Angular: ±
ALL DIMENSIONS IN MILLIMETRES			

Finish: Sand Casting: To ISO 8062 CT10
Die Casting: To ISO 8062 C18
Hole centres & posns: ±

Material: M20 CABLE GLAND

10 – Spare Parts List

The following spare parts can be ordered directly from the manufacturer:

Part Number	Description
C27691-01	LED Replacement Kit
C27713-00	LED Adapter
C27715-01	LED Cooler
C08884-00	Reflector
C27224-00	Front Glass
C20567-00	Front Glass Gasket
C27699-01	LED Driver (110/240V)
C28003-00	LED Driver (24v)
C22268-01	Breather Assembly
C11025-01	Lock Wheel Assembly (Deck & Deck Pedestal))
C10168-00	Base 'O' Ring (Deck & Cabin)
C20634-00	Pedestal Base 'O' Ring (Deck Pedestal & Cabin Pedestal)
C10169-00	Spigot 'O' Ring (Deck & Cabin)
C21967-00	Bellows Bottom Bush 'O' Ring (Deck & Cabin)
C22072-00	Push Rod Seal Washer (Deck & Cabin)
C20281-00	Bellows (Cabin & Cabin Pedestal)
C20745-01	Underdeck Lock Wheel Assembly (Cabin & Cabin Pedestal)

In order to prolong the life and performance of your product, we recommend that you only specify Francis Searchlights spare parts. This will ensure that any warranties on your equipment will not be invalidated.

When ordering spare parts please contact the Sales Department at Francis Searchlights Limited. Please quote searchlight model and serial number at all times. This will enable a fast response to your spares' requirements.