

Maximum 272 kW (365 hp) @2800 RPM (PLEASURE CRAFT)

STANDARD EQUIPMENT

MG-5050SC

Vertical offset, cast iron housing
 Mechanical control valve
 Oil strainer

MG-5050A

Vertical offset, cast iron housing
 10° down angle on output shaft
 Mechanical control valve
 Oil strainer

MG-5050RV

Vertical offset, cast iron housing
 10° down angle on output flange
 Input flange
 Mechanical control valve
 Oil strainer



INPUT RATINGS - KILOWATS (KW) (HORSEPOWER (HP))*

For service classification definitions and important notes refer to www.twindisc.com, the Twin Disc Marine Product Guide or contact Twin Disc directly.

MG-5050SC

Reduction Ratios :1	Pleasure Craft @ 2800 RPM	Light Duty @ 2800 RPM	Intermediate Duty @ 2500 RPM	Medium Duty @ 2100 RPM	Continuous Duty @ 2100 RPM
1.00, 1.11, 1.23, 1.53, 1.71, 2.04	272 kW (365 hp)	254 kW (341 hp)	187 kW (251 hp)	128 kW (172 hp)	116 kW (156 hp)
2.45	261 kW (350 hp)	223 kW (299 hp)			
3.00	231 kW (310 hp)	216 kW (290 hp)	170 kW (228 hp)	119 kW (160 hp)	108 kW (145 hp)

MG-5050A & MG-5050RV

Reduction Ratios :1	Pleasure Craft @ 2800 RPM	Light Duty @ 2800 RPM	Intermediate Duty @ 2500 RPM	Medium Duty @ 2100 RPM	Continuous Duty @ 2100 RPM
1.12, 1.25, 1.50, 1.80, 2.04	272 kW (365 hp)	254 kW (341 hp)	187 kW (251 hp)	128 kW (172 hp)	116 kW (156 hp)
2.50	239 kW (320 hp)	223 kW (299 hp)			

* Ratings shown for use with standard right-hand rotation engines.
 The maximum allowable rated engine speed is 3300 rpm (5500 rpm in high speed configuration).



Specifications subject to change without prior notice in the interest of continual product improvement.
 Contact your local Twin Disc representative for engineering specifications, Survey Society Approvals and Classifications.

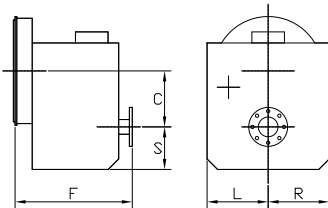
Scan QR code to see Twin Disc's entire Marine product line.



OPTIONS

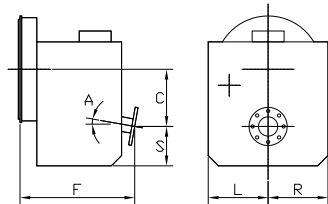
	MG-5050SC	MG-5050A	MG-5050RV
SAE J617 no. 2 to SAE J617 no. 1 housing adaptor	X	X	
SAE J617 housing no. 2	X	X	
SAE J617 housing no. 3	X	X	
SAE J617 housing no. 4	X	X	
Borg Warner housing	X	X	
Flexible coupling for 14" flywheel (SAE J620 size 355)	X	X	
Flexible coupling for 11.5" flywheel (SAE J620 size 290)	X	X	
Flexible coupling for 10" flywheel (SAE J620 size 255)	X	X	
Input flange for freestanding installation			standard
High speed configuration (3300-5500 rpm)	X	X	X
Electric control valve (12VDC or 24 VDC)	X	X	
Mechanical trolling valve	X	X	X
Oil cooler	X	X	X
Companion flange/bolts set	X	X	X
Monitoring devices to customer's specification	X	X	X
Mounting brackets	X	X	X
Live PTO:			
SAE J744 size 82-2, 16-4 (SAE "B", 2-bolt, max. 35 Nm)	X	X	
SAE J744 size 101-2/4, 22-4 (SAE "B", 2/4-bolt, max. 197 Nm)	X	X	
Dry weight incl. SAE #3 housing and SAE 290 flexible coupling	91 kg	91 kg	85 kg

MG-5050SC



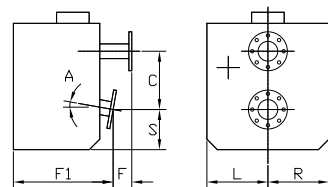
C	134 mm (5.28")
S	119 mm (4.69")
F	325 mm (12.78")
L	207 mm (8.13")
R	149 mm (5.85")

MG-5050A



C	140 mm (5.52")
S	93 mm (3.68")
F	307 mm (12.10")
L	207 mm (8.13")
R	149 mm (5.85")
A	10°

MG-5050RV



C	140 mm (5.52")
S	93 mm (3.68")
F	78 mm (3.06")
F1	257 mm (10.13")
L	207 mm (8.13")
R	149 mm (5.85")
A	10°

Twin Disc, Incorporated reminds users of these products that their safe operation depends on use in compliance with engineering information provided in our catalog. Users are also reminded that safe operation depends on proper installation, operation and routine maintenance and inspection under prevailing conditions. It is the responsibility of users (and not Twin Disc, Incorporated) to provide and install guards or safety devices which may be required by recognized safety standards or by the Occupational Safety and Health Act of 1970 and its subsequent provisions.

United States of America • Australia • Belgium • Canada • China • India • Italy • Singapore • Switzerland

For nearly a century, we've been making boats perform better and more reliably. From system-design consultation to application development to in-service support, Twin Disc provides fully integrated propulsion solutions that will optimize your craft's performance, reliability and safety over the years. Bring Twin Disc aboard early in the development process, and you'll enjoy a lifetime of enhanced operating value.

TRANSMISSIONS • ELECTRONIC CONTROLS • EXPRESS JOYSTICK SYSTEM® • SAILDRIVES • EXPRESS POSITIONING® • ARNESON SURFACE DRIVES • MARINE CONTROL DRIVES • ROLLA PROPELLERS • BOW & STERN THRUSTERS • STEERING SYSTEMS • RUDDERS • TRIM TABS



Twin Disc, Incorporated
Racine, Wisconsin 53403 USA
Phone +1-262-638-4000
Fax +1-262-638-4482
www.twindisc.com

TD-Bulletin-MG-5050_Series
© 2016, Twin Disc, Incorporated
Printed in the USA - 1/2016